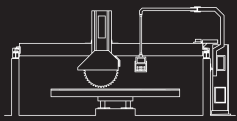


GMM
STONE MACHINERY

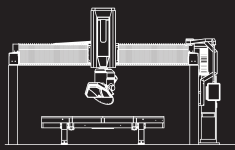
EXPERIENCE & QUALITY

Tower 托立

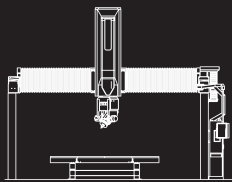
VERTICAL POLISHING MACHINE FOR STRAIGHT EDGES / 自动立式直边磨边机



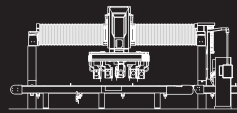
BRIDGE SAWING MACHINES



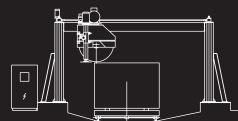
5-AXIS SAWING MACHINES



5-AXIS SHAPING MACHINES



CUTTING CENTER MACHINES



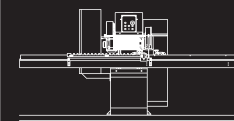
BLOCK CUTTER



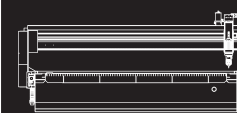
EDGE POLISHER / 磨边机



CALIBRATING AND POLISHING MACHINES



LINES AND
COMPLEMENTARY MACHINERY



WATER JET



POWER & CONTROL



EXPERIENCE & QUALITY



TECHNOLOGY & INNOVATION



TECHNOLOGY & INNOVATION



EXPERIENCE & QUALITY



POWER & CONTROL



Tower 托立

PROFILES / 仿形

FLAT EDGE
直边



BEVELLING
斜面



FRONTAL CUT
水平切前边



INCLINED CUT
倾斜边



ROUGH MOULDING EX. 3
成形轮铣削 (例子3)



ROUGH MOULDING EX. 1
成形轮铣削 (例子1)



WATER DRIP UP
上部滴水槽

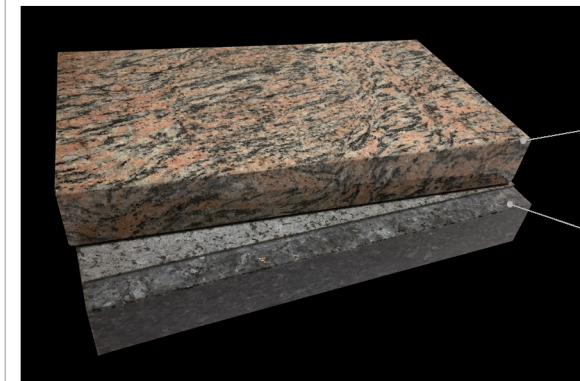
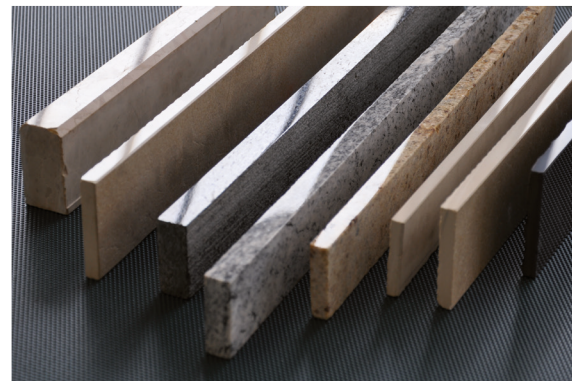


OPTIONS / 选项

PARTIAL BEVELLING WORK
斜面分段加工



CALIBRATING
定厚加工





MAIN CHARACTERISTICS

主要特性

Machine bed 设备基座

Strong electroweld, fully worked with numeric control machines. Sanding followed by a cold-galvanized treatment and two successive coats of dual component epoxy paint.

结实强大的焊接·全部由数控设备制作完成。经过喷砂、冷镀锌处理·再涂上两层含两种环氧树脂成份的油漆。

Belt 滑动面皮带

Three-layer, 30 cm wide belt has a grooved guide on the base to guarantee the maximum adherence of the belt to the line to be worked. Belt gliding surface is ground and covered with a special interchangeable wear-resistant steel plate.

共3层·30厘米宽·底部有轨槽·保证生产线上的加工材料对齐。滑动面皮带覆盖着交替的耐磨钢带。

Spindles 主轴

Standard: identical on all work units. Fitted with a bellows for slide protection and having a double labyrinth seal to protect from water, moisture and dust. To further guarantee the seal, there is a **slight internal pressure**.

标准型：全部加工单元均配有风箱以加强滑动保护·采用双重迷宫式密封进行防水、防尘。**内部有低压输送**以增强密封效果。

Spindle-holder bar 电主轴支架

Polishes the edges, using universal tools. The spindles, each one controlled by its own electric motor (protection IP65), are housed in a sturdy sealed bar which empties the water directly into the tank. The computerized system allows programming by inverter a **micro-oscillation** ("swing") above all on straight, thick flat edges to increase the work speed and improve the degree of polishing. The abrasive discs used are 130 or 150 mm in diameter.

磨边作业均使用通用刀具。

每个主轴由独立电机驱动·封装在坚固的密闭舱内·废水会直接排入集水槽。通过计算机的系统·在加工厚直边时编制**微震荡定向器**·提升加工速度和保证抛光质量。磨盘直径130或150毫米。

Bevellers 倒角头

Mounted in opposition at 45° angles, they make a double bevel on the straight edge using a 130 mm diameter abrasive disc. The first pair of bevellers has a mechanical stop for the use of diamond tools.

它们以45°对角位置安装·使用Ø130毫米金刚石磨盘在直边上形成双斜面·第一对倒角头(机械制动)可安装金刚石工具。

Touch screen 触摸屏

Allow to manage all the functions of the machine. In particular it is possible to program the entrance and the exit of each unit to ensure quality and precision on all specific working. Are allowed the **partial workings** (Optional).

可以操控机械所有功能。特别能操控石料的进出·以确保加工质量和精准度。也可操控**局部加工**(选项)。

Rollers 辊轴

The machine is equipped with two, 1-meter rollers, one at the entrance and one at the exit, respectively. Each roller is equipped with side rails to prevent the piece from tipping.

共2个·每个1米·分别位于机械的进口和出口·每个辊轴都配有侧轨·以防止板料倾翻。

Tanks 集水槽

The machine is equipped with several stainless steel water collection tanks to maintain proper functioning and the duration of individual components.

装配了多个不锈钢集水槽·确保机械长期运作顺畅。

Guards 保护装置

The external casings are in sturdy fibreglass while the pressing bar and the single unit guards are in stainless steel.

设备前端保护盖由坚固的玻璃纤维制成·压架和独立单元则由不锈钢制成。



POWER & CONTROL



EXPERIENCE & QUALITY



TECHNOLOGY & INNOVATION

TOWER, THE RIGHT CHOICE REASONS

托立 您的最佳之选

Project 项目 / 工程

GMM realized a machine with technological characteristics completely identical to the horizontal machines, made to last over time, flexible and easy to use with minimal maintenance costs.

独特的适应性设计使本磨边机的工艺特点与卧式机械完全相同·并以最少的运维成本灵活使用。

Price 价格

Certainly very economical when compared with the characteristics and capabilities of the machine.

从技术特点及其功能的角度来看·性价比极好。

Dimensions 尺寸

Reduced thanks to the vertical positioning of the piece, even though the structures are sized plentifully.

尽管结构尖端·采用垂直的结构排列·尺寸得到有效的减小。

No need for foundations 无需地基

It is enough to place it on the ground, using the supplied adjustable anti-vibration pads.

只需把设备放置在地上后调节防震衬垫。

Reliability 可靠性高

Most of the components have been thoroughly proven since they come from the "big sisters", parts such as the spindles, the slew, the calibrator/drip and the chamfering.

绝大多数的部件例如主轴·旋转轴·校准器·倒角部件都来自认证的大品牌供应商。

Machine life 机械寿命

Guaranteed by the careful application of high quality components, surface treatments and by the use of rust-resistant materials. Special care has been taken in the water collection and discharge so as to maintain a longer life for the mechanical and electrical components.

表面使用高质量配件·经特殊处理·材料经过防锈处理·保证机械寿命。同时·特别注意废水废料回收·保证机械和电子部件更长的使用寿命。

Electronics 电子控制

Identical to those of the horizontal machine, using the same software developed by GMM and therefore perfectible and customizable.

与卧式机械完全相同·使用同样由GMM开发的软件·因此完整性更好·适应性更强。

Everything under control in easy way 一切尽在掌握

On the touch screen are visualized all the main functions to program the work and to control the most important parameters during the machine operation. In addition it is possible to memorize many data and information like working times, statistics, alarm history, recipes of previous particular profiles...

触摸屏显示所有的工作程序的主要功能·可控制最重要的参数。同时·它还能记录许多数据和信息·例如工作时间·统计·报警历史·之前的仿形资料...

Details with make a difference 精心制作

The machine can be equipped with an electronic system (Optional), which detects the end of an abrasive, lift up the corresponding operating unit and sends alarm signal to the operator. More efficiency and less consumption of abrasives.

可以配备一个电子系统(选项)·用于检测磨料的末端·联系相应的操作单元·并发出警报信号给操作员。大大提高了研磨效率并降低了磨料消耗。

Performance 性能

Flexible in use, it can work very small pieces with no difficulty but also average sized particulars with thicknesses up to 60mm.

Having 7 polishing heads and the floating heads system (very important), the productivity is much higher with respect to similar machines.

使用灵活·可轻而易举地处理极小至60毫米厚度尺寸的板料。6或7个磨头以及非常重要的浮头系统·使其与同类机械相比生产效率更高。

Investment 投资

For all the above reasons, it has the certain returns in a short time.

综上所述·短期内必有回报。

TECHNOLOGY & INNOVATION



EXPERIENCE & QUALITY



POWER & CONTROL



Tower 托立

Floating Head System

浮头系统



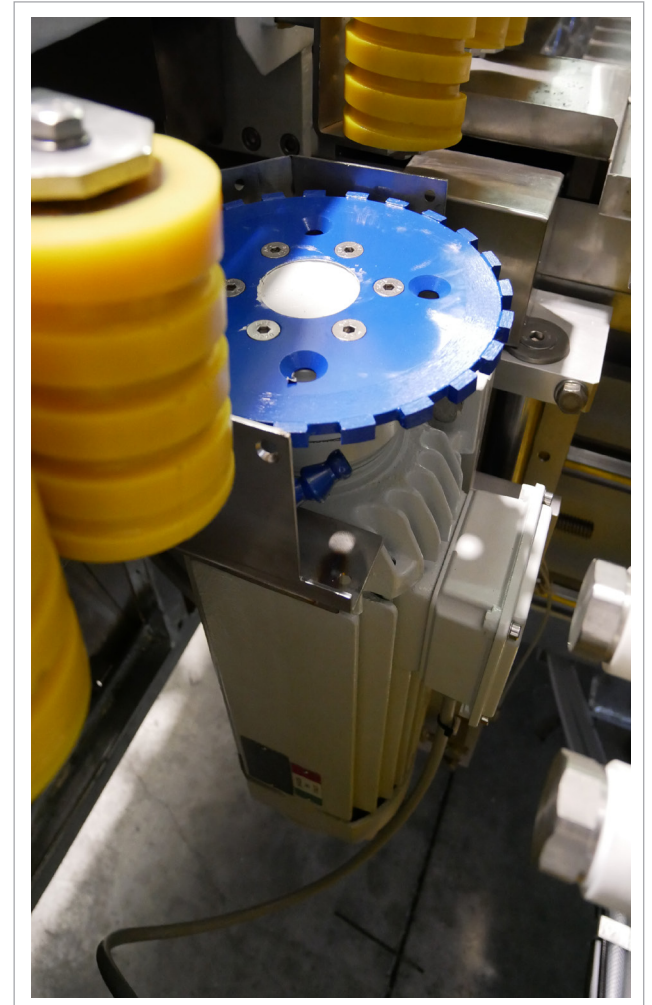
Sandblasting

喷砂



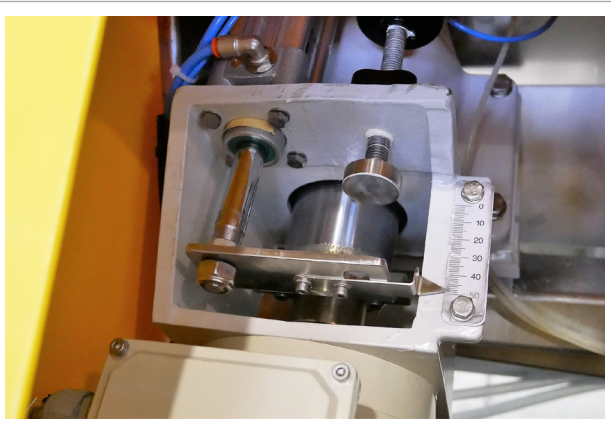
Drip cut

滴水槽切割



Mechanical stop

机械制动



Rotating Calibrating/Drip unit (optional)

旋转定厚校准器/滴水沟切(选项)



TECHNOLOGY & INNOVATION



EXPERIENCE & QUALITY



POWER & CONTROL

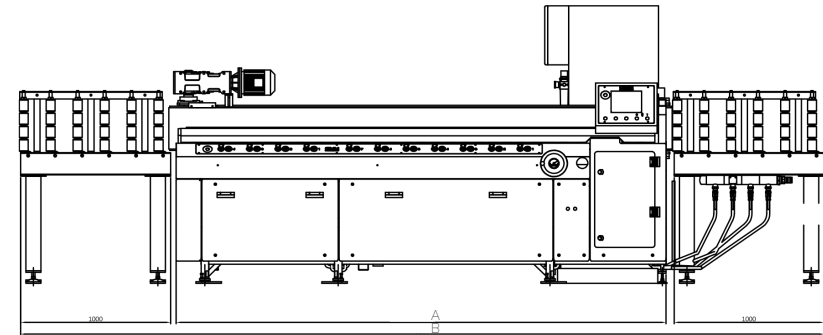


Tower 托立

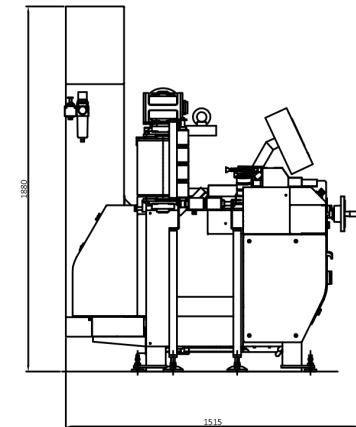
TECHNICAL DATA / 技术参数

	Tower 72	Tower 73	TOWER 74	Tower 74G
NUMBER OF POLISHING SPINDLES 磨轴数量	7	7	7	7
TOTAL POLISHING SPINDLES POWER 磨轴总功率	17 kw	19 kw	20 kw	23 kw
OSCILLATION OF SPINDLES BAR 磨轴摇臂	standard 标准	standard 标准	standard 标准	standard 标准
CALIBRATING / DRIP CUT / SHAPING UNIT AT THE ENTRANCE 校准轴/ 切槽 / 成形单元	optional 可增选	optional 可增选	optional 可增选	optional 可增选
NUMBER OF BEVEL SPINDLES 倒角轴 (45°)数量	2	3	4	4
DRIP CUT UNIT 切槽单元	optional 可增选	optional 可增选	optional 可增选	1
AUTOMATIC MANAGEMENT END OF ABRASIVE 自动末端磨料管理	optional 可增选	optional 可增选	optional 可增选	optional 可增选
WORKING THICKNESS MIN/MAX 最小/最大工作厚度	8-60	8-60	8-60	8-60
MIN WORKING WIDTH 最小工作宽	45 mm	45 mm	45 mm	45 mm
APPROXIMATE WEIGHT 设备重量	2550 kg	2600 kg	2650 kg	2800 kg
OVERALL DIMENSION 总尺寸: 长 x 宽 x 高	3.4x1.35x1.6 m	3.4x1.35x1.6 m	3.4x1.35x1.6 m	3.8x1.35x1.6 m
TYPICAL GRINDING WHEELS DIAMETER- 磨削轮直径	130-150 mm	130-150 mm	130-150 mm	130-150 mm

*OPTIONAL
选项



	Tower 72-74	Tower 72G	Tower 74G
A mm	3400	3400	3800
B mm	5370	5370	5870





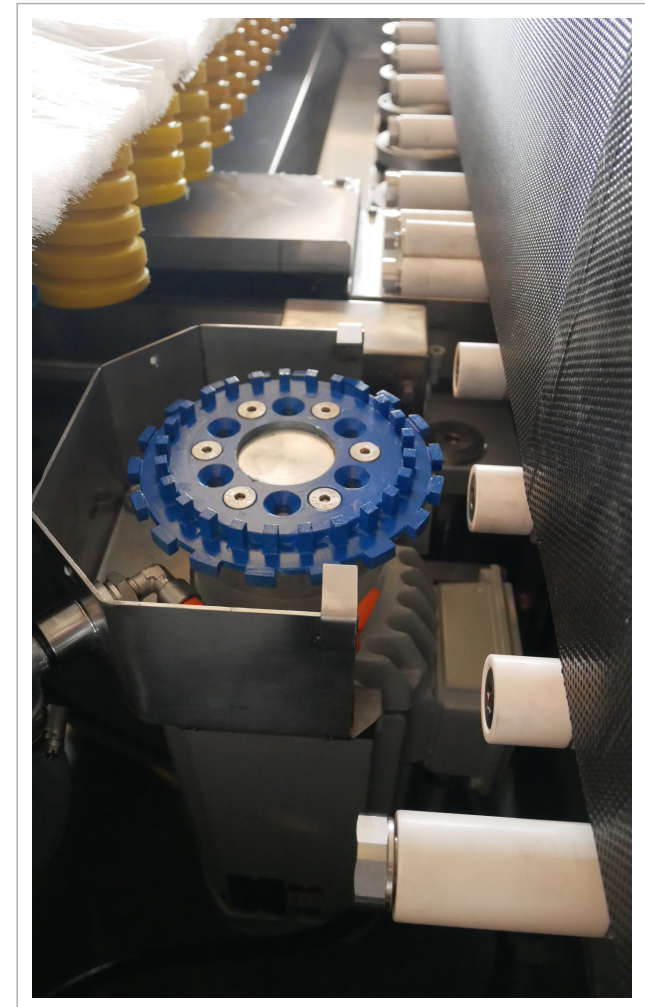
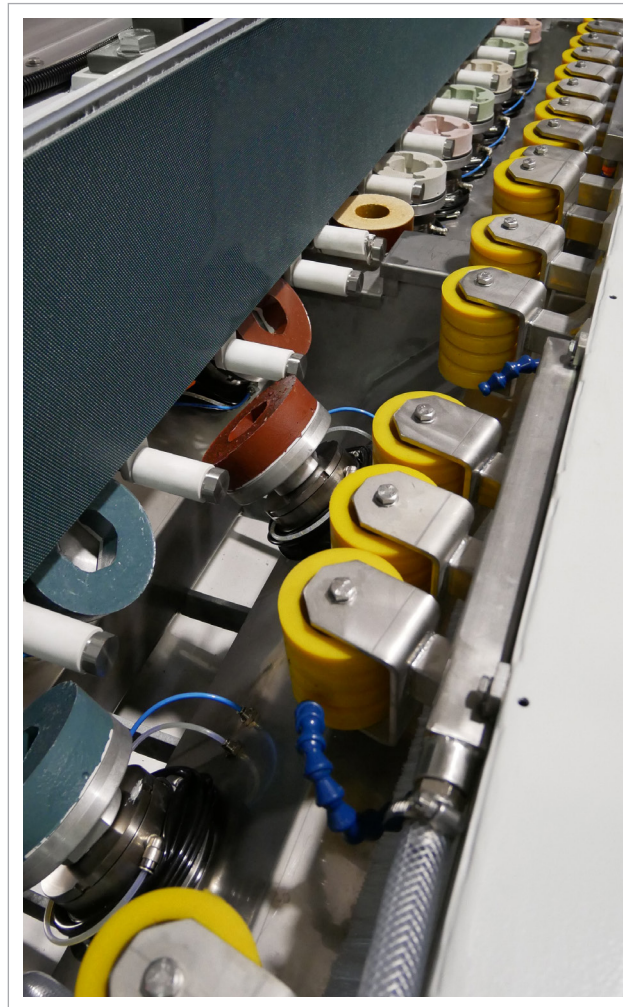
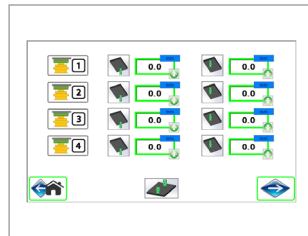
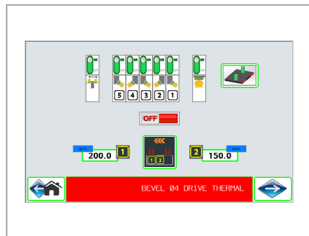
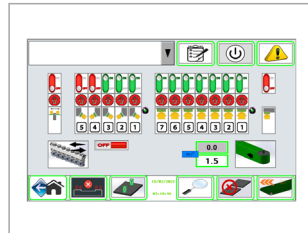
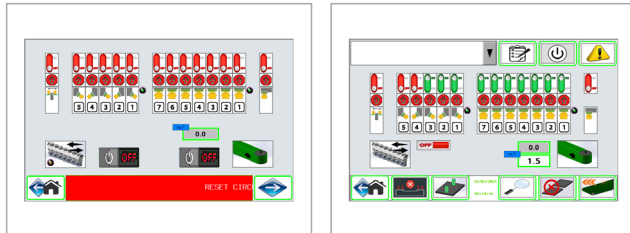
POWER & CONTROL



EXPERIENCE & QUALITY



TECHNOLOGY & INNOVATION





TECHNOLOGY & INNOVATION



EXPERIENCE & QUALITY



POWER & CONTROL

Tower 托立

The Tower range of line machines have been designed to work on all types of marble, granite, stone and agglomerate materials.

托立系列磨边机专门用于加工各种大理石、花岗石及人造石。

All the Tower machines are characterized by compact size and extreme ease of use which is matched by excellent productivity. The micro-oscillation ("swing") of the spindle-holder bar makes the Tower versatile, suited for both specific and specialized production and mass production.

托立的特点是机座小巧、操作简易、产量极高。

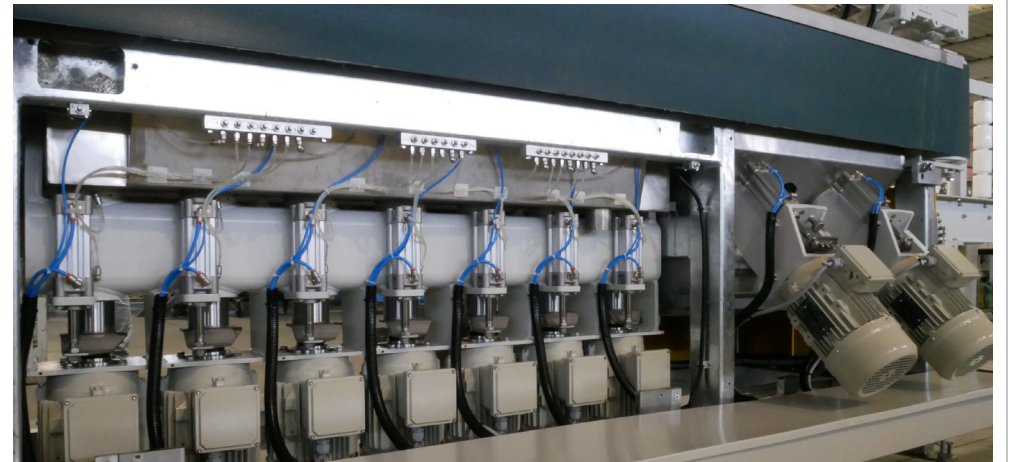
主轴托架上的摇臂让托立适合大批量、专业化生产。

In addition, these machines are able to work on particularly narrow strips (50 mm) to produce the flat edge on baseboards or on the "back splash".

此外，托立也能加工特别窄小石料（50毫米），用以生产护壁板和后防水板。

With different possibility of compositions this machine can meet the customer's specific requirement.

配合不同的机械组件，能够满足客户的特殊要求。





GMM S.P.A.
HEADQUARTER 意大利总部
 Via Nuova, 155 - 28883 Gravelona Toce (VB) ITALY
 Tel. +39 0323 849711 - Fax +39 0323 864517
 gmm@gmm.it - www.gmm.it

GMM S.P.A. SCHIO
BUSINESS UNIT
 Via Lago di Misurina, 72 - 36015 Schio (VI) ITALY
 Tel. +39 0445 576226 - Fax. +39 0445 576244
 gmm@gmm.it - www.gmm.it

MECTOCE S.R.L.
PRODUCTION UNIT
 Via Caduti del Lavoro, 20/22 - 28886 Pieve Vergonte (VB) ITALY
 Tel. +39 0324 86312 - Fax +39 0324 869677
 informazioni@mectoce.it - www.mectoce.it

GMM STEINBEARBEITUNGSMASCHINEN GMBH
COMMERCIAL / AFTER SALES UNIT
 Karlshöhlchen 6
 76872 Freckenfeld
 GERMANY
 Tel. +49 6340 7119652
 info@gmm-steinbearbeitung.de
 www.gmm-steinbearbeitung.de

WPA WATERJET PRODUCTION ACADEMY GMBH
DISTRIBUTOR
 Zeppelinstraße 7a
 76185 Karlsruhe
 GERMANY
 Tel. +49(0)721 46466226
 info@wpa-gmbh.com
 www.wpa-gmbh.com

GMM USA INC.
COMMERCIAL / AFTER SALES UNIT
 8610 Airpark West Drive
 Suite 100
 Charlotte, NC 28214
 USA
 Tel. +1 980 242 2969
 info.gmmusa@gmm.it
 www.gmm.it

TECHNI WATERJET LLC
COMMERCIAL / AFTER SALES UNIT
 8610 Airpark West Drive
 Suite 100
 Charlotte, NC 28214
 USA
 Tel. +1 980 242 2969
 enquiry@techniwaterjet.com
 www.techniwaterjet.com

TECHNI WATERJET LTD.
PRODUCTION UNIT
 300/21 MOO 1, Tambol Tasith
 Ampur Pluakdaeng, Rayong,
 THAILAND 21140
 Tel. +66 (0) 33 012 561-4
 Fax +66 (0) 33 012 565
 sales@techniwaterjet.com
 www.techniwaterjet.com

TECHNI WATERJET LTD.
MELBOURNE HEAD OFFICE
 47 Barry Rd.
 Campbellfield - VICTORIA
 AUSTRALIA 3061
 Tel. +61 3 9357 8360
 Fax +61 3 9357 0446
 www.techniwaterjet.com

GMM INTERNATIONAL LTD.
 凌意国际有限公司
 Unit 1717, New Tech Plaza,
 34 Tai Yau Street, Kowloon
 HONG KONG
 香港九龙大有街34号
 新科技广场17楼17室
 Tel: +852-23666386
 Fax: +852-23670525
 info@gmm.com.hk
 www.gmmchina.cn

GMM (QUANZHOU) LTD.
 泉州意美美机械有限公司
 No.3C-1, Phase 2, Cathay Stone Mall,
 Shuitou Town, Nan'an City, Fujian Pro vince,
 CHINA 362342
 福建南安海联创业园海西石材城大理石
 精品市场二期分区商铺3C-1 邮编:362342
 Tel: +86-595-86097072
 +86-13430504901
 info@gmmchina.cn
 www.gmmchina.cn

Tower 托立



EDGE POLISHER / 磨边机

Toro | Costa

Technical data are not binding and may be changed by GMM without prior notice.
 技术参数不具有约束力 · GMM可能会更改 · 恕不另行通知。

IMPORTANT: machines displayed in the present catalogue are without safety barriers in order to ensure the perfect vision of all the details of the machine. All machines will be delivered and installed with safety barriers as per current legislation. The data in the present catalogue may vary without notice due to continuous update of technology.

重要说明: 本说明书为了更清晰地展现设备全貌 · 在拍照时撤离了安全保护屏障 · 设备在实际交付与安装时都会配备安装保护屏 · 本产品说明书中的所有参数可能因更新原因而有所不同 · 请按照当时咨询时为准。

ISO 9001

BUREAU VERITAS
 Certification



Member of
 CONFINDUSTRIA MARMOMACCHINE
 ASSOCIAMACCHINE

